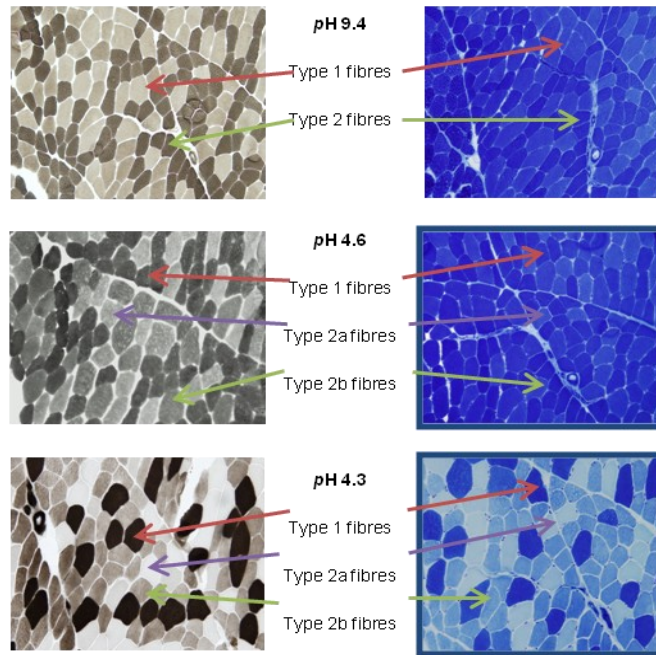




Ammonium sulphide ATPase

Azure A ATPase



Establishing Histological Tissue Parameters of normal Skeletal muscle for a better diagnosis.

A Research Masters talk by Dianne Reader.

When: 22nd February, 2012

Where: Douglas Hanley Moir, (14 Giffnock Ave, Macquarie Park NSW 2113)

Time: 6:30 for a 7 pm start.

Contact: BCheerala@dhm.com.au or check the website/email for details.

Diary Dates:

Talks and Workshops for 2012 are updated on the Histotechnology Group of NSW.

www.histonsw.org.au

I will be attending the talk/lecture/workshop.

Name: _____ Contact no. _____

Number of people attending: _____

Remember NATA Accreditation requires personnel who work in laboratories to attend continuing education sessions. All meetings sponsored by the Histotechnology Group of NSW count towards these requirements.

